



# FLANGELESS CHECK VALVE

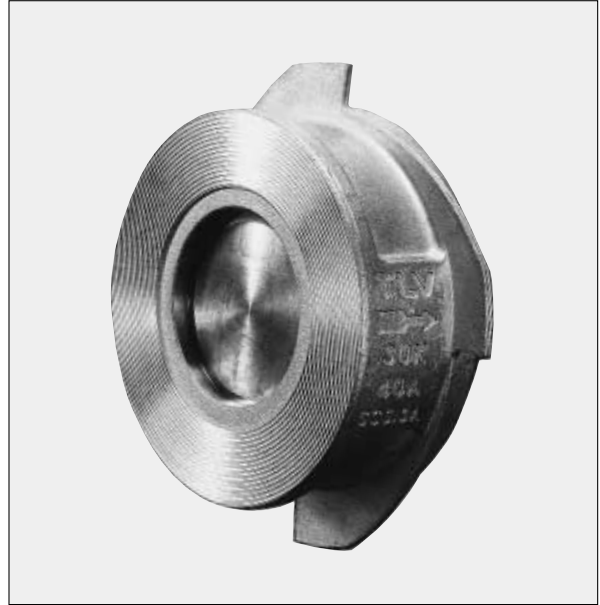
## MODEL CKF3M/CKF3R STAINLESS STEEL

### DISC TYPE CHECK VALVE BETWEEN FLANGES

#### Features

**Compact stainless steel check valve for steam, air, water and other fluid services.**

1. Fine-machined metal or fluorine rubber valve seat provides tight closure.
2. Stainless steel body and internal parts ensure long service life.
3. Performance assured with installation in either horizontal or vertical pipelines.
4. Can be simply installed between all major flange types without measuring instruments, concentric due to its unique body shape.
5. Easy repair and maintenance possible.



#### Specifications

Model	CKF3M	CKF3R
Connection	Between Flanges	Between Flanges
Size	DN 15, 20, 25, 32, 40	DN 15, 20, 25, 32, 40
Compatible Flange Standards	Shown on reverse	Shown on reverse
Maximum Operating Pressure (barg) PMO	30	16
Minimum Opening Differential Pressure (bar)	0.02	0.02
Minimum Required Differential Pressure for Tight Sealing (bar)	—	0.5
Maximum Operating Temperature (°C) TMO	350	150
Minimum Operating Temperature (°C)	-100*	-30*
Application	Steam, Water and other liquids**	Air, Water and other fluids**

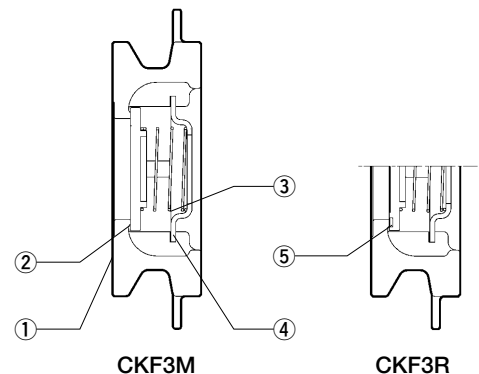
\* Subject to limitations of freezing point of fluid \*\* Do not use for toxic, flammable or otherwise hazardous fluids 1 bar = 0.1 MPa  
PRESSURE SHELL DESIGN CONDITIONS (**NOT** OPERATING CONDITIONS): Maximum Allowable Pressure (barg) PMA: 30  
Maximum Allowable Temperature (°C) TMA: 350



To avoid abnormal operation, accidents or serious injury, DO NOT use this product outside of the specification range. Local regulations may restrict the use of this product to below the conditions quoted.

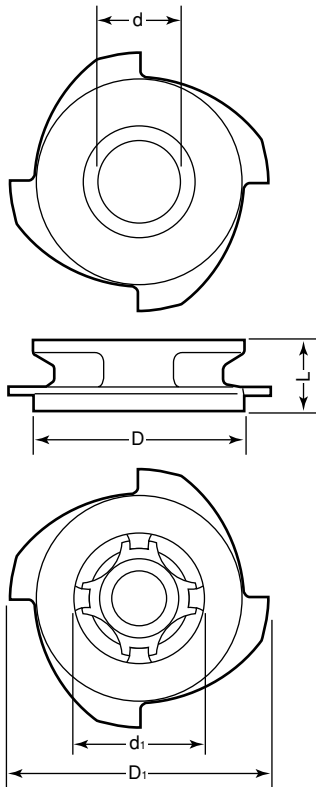
No.	Description	Material	DIN*	ASTM/AISI*
①	Body	Cast Stainless Steel A351 Gr.CF8	1.4312	—
②	Valve Disc	Stainless Steel SUS303	1.4305	AISI303
③	Coil Spring	Stainless Steel SUS304	1.4301	AISI304
④	Spring Holder	Stainless Steel SUS304	1.4301	AISI304
⑤	Valve Disc Inlay (CKF3R)	Fluorine Rubber FPM	FPM	D2000HK

\* Equivalent materials



**Dimensions**

● CKF3M/CKF3R Flangeless



**CKF3M/CKF3R Flangeless** (mm)

DN	L	φ D	D <sub>1</sub>	φ d	φ d <sub>1</sub>	Weight (kg)
15	16	43	64	15	25	0.14
20	19	53	69	20	33	0.22
25	22	63	79	25	40	0.33
32	28	72.5	89	32	48	0.51
40	31.5	81	100	40	57	0.62

**Compatible Flange Standards**

Model	Size	ASME, JPI	JIS	DIN	BS Table
CKF3M	15 - 40	Class 150, 300	5, 10, 16, 20, 30, 40K	PN 6, 10, 16, 25, 40	D, E, F, H, J
CKF3R					

**Cv & Kvs Values**

DN	15	20	25	32	40
Kvs (DIN)	3.9	7.5	14	17	25
Cv (UK)	3.8	7.3	13	17	24
Cv (US)	4.6	8.8	16	20	29

Manufacturer

ISO 9001/ISO 14001

**TLV** CO., LTD.  
Kakogawa, Japan

is approved by LRQA Ltd. to ISO 9001/14001

