



FREE FLOAT[®] STEAM TRAP

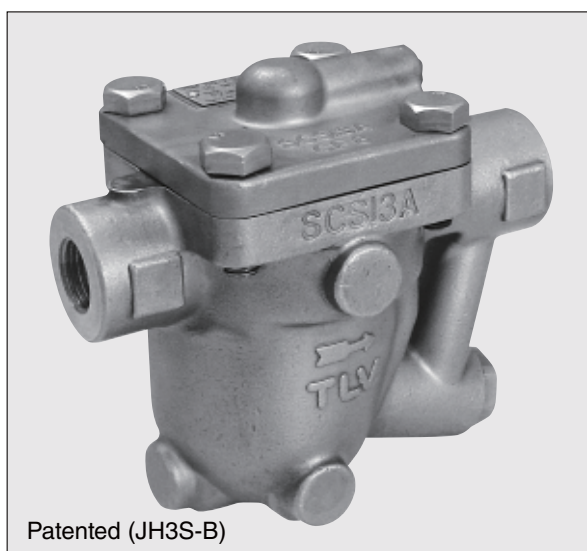
MODEL JH3S-X/JH3S-B

FREE FLOAT STEAM TRAP WITH THERMOSTATIC AIR VENTING

Features

A reliable and durable stainless steel steam trap for use on small-size process equipment. JH3S-B is also suitable for both superheated and high-pressure process equipment.

1. Self-modulating free float provides continuous, smooth, low-velocity condensate discharge as process loads vary.
2. Precision-ground float, constant water seal and three-point seating design ensure a steam-tight seal, even under no-load conditions.
3. **JH3S-X**: Thermostatic capsule (X-element) with "fail open" feature vents air automatically at close-to-steam temperature.
4. **JH3S-B**: Thermostatic bimetal air vent valve vents air automatically for rapid startup.
5. Built-in screen with large surface area ensures extended trouble-free operation.
6. Easy, inline access to internal parts simplifies cleaning and reduces maintenance costs.



Patented (JH3S-B)

Specifications

Model	JH3S-X			JH3S-B		
	Screwed	Socket Welded	Flanged	Screwed	Socket Welded	Flanged
Size (mm)	15, 20, 25			15, 20, 25		
Orifice No.	2, 5, 10, 14, 22, 32			2, 5, 10, 14, 22, 32		
Maximum Operating Pressure (MPaG) PMO	0.2, 0.5, 1.0, 1.4, 2.2, 3.2			0.2, 0.5, 1.0, 1.4, 2.2, 3.2		
Maximum Differential Pressure (MPa) ΔPMX	0.2, 0.5, 1.0, 1.4, 2.2, 3.2			0.2, 0.5, 1.0, 1.4, 2.2, 3.2		
Minimum Operating Pressure (MPaG)	0.01			0.01		
Maximum Operating Temperature (°C) TMO	240			350		
Type of Air Vent	X-element (type B: 6 °C subcooling) (Optional type H*: 11 °C subcooling)			Bimetal (vents air up to approx. 100 °C)		

* Trap discharge capacity will decrease slightly. Contact TLV for information.

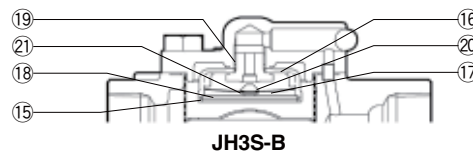
1 MPa = 10.197 kg/cm²

PRESSURE SHELL DESIGN CONDITIONS (NOT OPERATING CONDITIONS): Maximum Allowable Pressure (MPaG) PMA: 3.2
Maximum Allowable Temperature (°C) TMA: 350

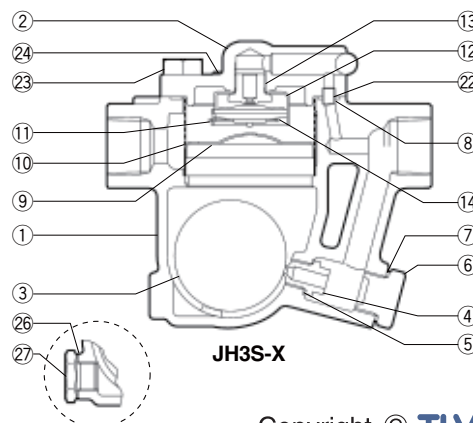


To avoid abnormal operation, accidents or serious injury, DO NOT use this product outside of the specification range. Local regulations may restrict the use of this product to below the conditions quoted.

No.	Description	Material	JIS	ASTM/AISI ¹⁾
①	Body	Cast Stainless Steel	—	A351 Gr.CF8
②	Cover	Cast Stainless Steel	—	A351 Gr.CF8
③ ^F	Float	Stainless Steel	SUS316L	AISI316L
④ ^R	Orifice	—	—	—
⑤ ^{MR}	Orifice Gasket	Stainless Steel	SUS316L	AISI316L
⑥	Orifice Plug	Stainless Steel	—	A351 Gr.CF8
⑦ ^{MR}	Orifice Plug Gasket	Stainless Steel	SUS316L	AISI316L
⑧ ^{MR}	Cover Gasket	Graphite/Stainless Steel	—/SUS316L	—/AISI316L
⑨ ^R	Float Cover	Stainless Steel	SUS304	AISI304
⑩ ^R	Screen inside/outside ²⁾	Stainless Steel	SUS430/304	AISI430/304
⑪ ^R	Spring Clip	Stainless Steel	SUS304	AISI304
⑫ ^R	X-element Guide	Stainless Steel	SUS304	AISI304
⑬ ^R	Air Vent Valve Seat	Stainless Steel	SUS420F	AISI420F
⑭ ^R	X-element	Stainless Steel	—	—
⑮ ^R	Snap Ring	Stainless Steel	SUS304	AISI304
⑯ ^R	Air Vent Case	Cast Stainless Steel	—	A351 Gr.CF8
⑰ ^R	Bimetal Plate	Bimetal	—	—
⑱ ^R	Air Vent Screen	Stainless Steel	SUS304	AISI304
⑲ ^R	Air Vent Valve Seat	—	—	—
⑳ ^R	Air Vent Valve Plug	—	—	—
㉑ ^R	Snap Ring	Stainless Steel	SUS304	AISI304
㉒	Connector	Stainless Steel	SUS416	AISI416
㉓	Cover Bolt	Stainless Steel	SUS304	AISI304
㉔	Nameplate	Stainless Steel	SUS304	AISI304
㉕	Flange ^{3)/Socket³⁾}	Cast Stainless Steel	—	A351 Gr.CF8
㉖	Drain Plug Gasket ⁴⁾	Stainless Steel	SUS316L	AISI316L
㉗	Drain Plug ⁴⁾	Stainless Steel	SUS303	AISI303



JH3S-B



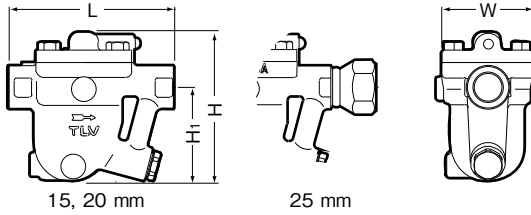
JH3S-X

Copyright © TLV

¹⁾ Equivalent ²⁾ JH3S-B: inside only ³⁾ Shown on reverse ⁴⁾ Option
Replacement kits available: (M) maintenance parts, (R) repair parts, (F) float

Dimensions

● **JH3S-X/JH3S-B** Screwed

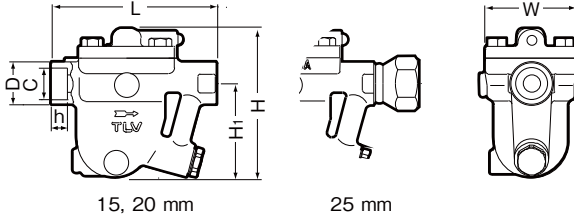


JH3S-X/JH3S-B Screwed* (mm)

Size	L	H	H ₁	W	Weight (kg)
15	145	129	82	80	2.7
20					2.8
25	203				

* Rc(PT), other standards available

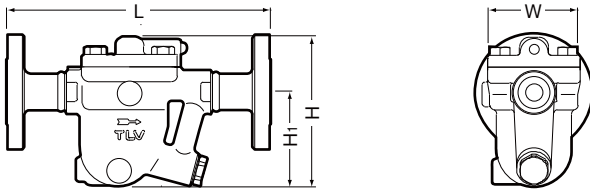
● **JH3S-X/JH3S-B** Socket Welded



JH3S-X/JH3S-B Socket Welded (mm)

Size	L	H	H ₁	W	φD	φC	h	Weight (kg)
15	145	129	82	80	36	22.2	12	2.7
20							14	
25	203				44	34.5		2.8

● **JH3S-X/JH3S-B** Flanged



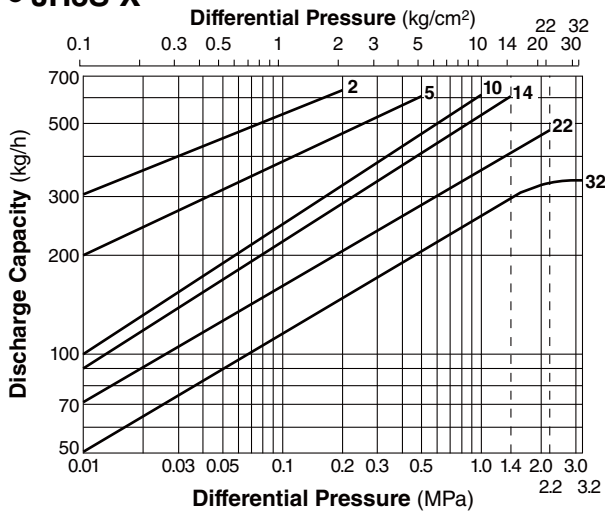
JH3S-X/JH3S-B Flanged (mm)

Size	L			H	H ₁	W	Weight* (kg)
	ASME Class						
	150RF	300RF	600RF				
15	210	210	220	129	82	80	4.3
20	230	230	230				5.1
25	250	250	250				5.8

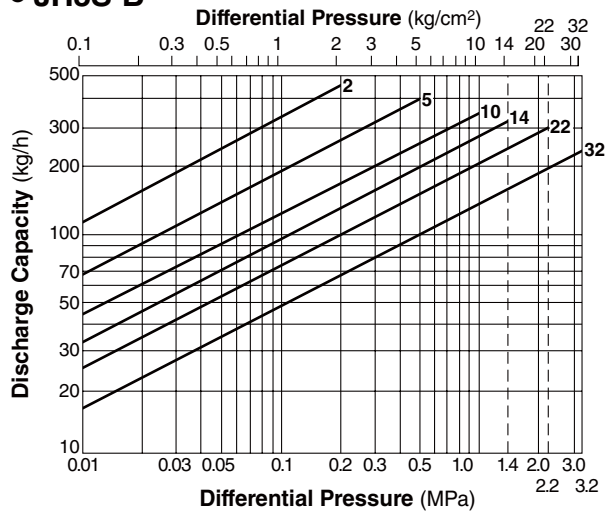
Other standards available, but length and weight may vary
* Weight is for class 600 RF

Discharge Capacity

● **JH3S-X**



● **JH3S-B**



1. Line numbers within the graph are orifice numbers.
2. Differential pressure is the difference between the inlet and outlet pressure of the trap.
3. Capacities are based on continuous discharge of condensate 6°C below saturated steam temperature.
4. Recommended safety factor: at least 1.5.

CAUTION Do not use traps under conditions that exceed maximum differential pressure, as condensate backup will occur!

Manufacturer

ISO 9001/ISO 14001

TLV CO., LTD.
Kakogawa, Japan

is approved by LRQA Ltd. to ISO 9001/14001

