

ISO 9001  
ISO14001



Manufacturer

**TLV** CO., LTD.

Kakogawa, Japan

is approved by LRQA Ltd. to ISO 9001/14001



# PT3 Firmware Update Procedure

---

172-65903M-00

Publication date 7 January 2026

Copyright © 2026 TLV CO., LTD.

# PT3 Firmware Update Procedure

## Applicable model

Pocket TrapMan PT3

## Required items

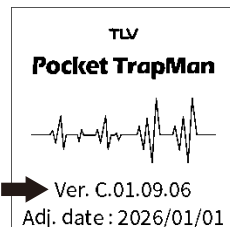
- Windows 11 PC
- USB Type C cable (USB-IF certified)

## Precautions for firmware update

- Make sure the PC is connected to an AC power supply.
- Make sure that the PT3 battery level is at least 50% before starting the update.
- Do not disconnect the USB Type C cable during the update.
- Do not remove the PT3 battery during the update.


## How to check the PT3 firmware version

1. Turn on the PT3.
2. The startup screen will appear.
3. "Ver. C.xx.xx.xx" indicates the current firmware version.

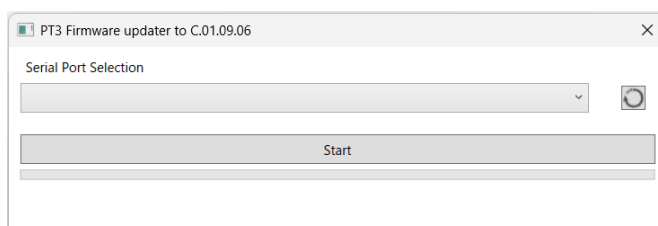


## Update the firmware

1. After extracting the downloaded file, the following files will be generated:
  - PT3\_firmware\_updater.exe
  - PT3\_firmware\_updater.exe.config
2. Double-click PT3\_firmware\_updater.exe.

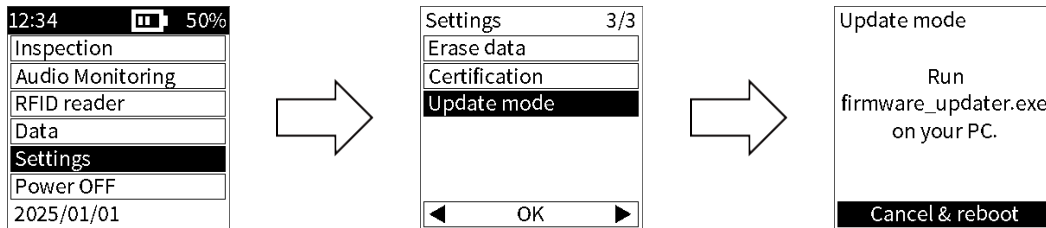
 PT3\_Firmware\_updater.exe

The following window will be displayed.

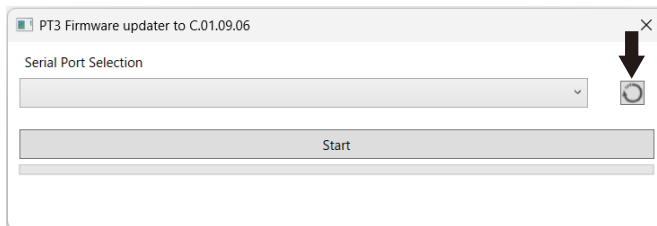


3. Turn ON the PT3.

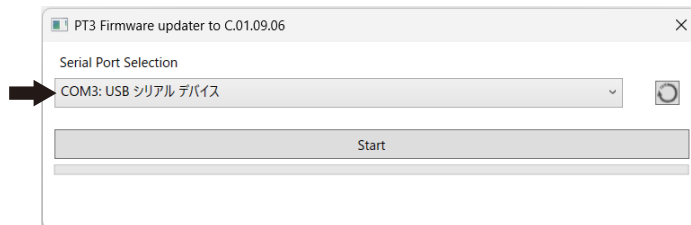
4. From the settings screen, switch to a firmware update mode.



5. Connect the PT3 and the PC using a USB Type C cable, then click the Refresh button in the "Serial Port Selection" field.

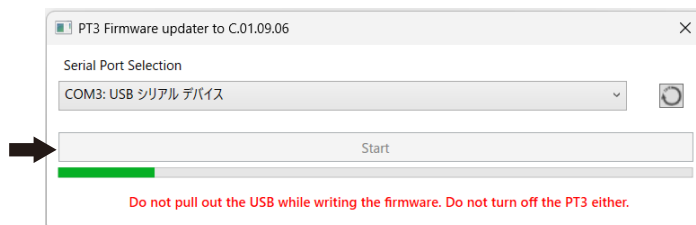


6. Confirm that USB serial device appears in the "Serial Port Selection" list.

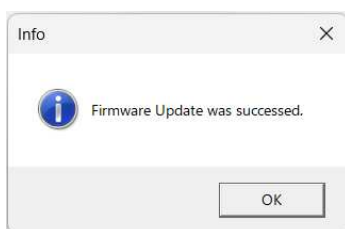


7. Click [Start] to begin the update.

The update will complete when the green progress bar reaches its maximum. During the update, the LED at the bottom of the PT3 will blink red.



8. When the pop-up message shown below appears, the update has been completed. Click [OK] to close the window.



9. Disconnect the USB Type C cable from the PT3.

Follow the steps in the "How to check the PT3 firmware version" section to confirm that the firmware version has been updated.