



HIGH CAPACITY BALANCED PRESSURE THERMOSTATIC STEAM TRAP

MODEL LV6-HC Clean Steam Trap

HIGH CAPACITY STAINLESS STEEL THERMOSTATIC STEAM TRAP FOR PURE AND CLEAN STEAM SYSTEMS

Benefits

Balanced pressure thermostatic steam trap recommended for use in reactors, sterilizers and distribution lines in clean and pure steam systems.

1. Free-draining, virtually crevice-free design minimizes the possibility of bacteria buildup.
2. "Fail open" feature will not hold back condensate in steam space.
3. Large orifice provides high air venting capacity for rapid start-up and resists plugging to ensure continuous operation.
4. Compact for easy installation.
5. Maintainable design lowers cleaning costs.
6. LV6-HP polished to 0.8 μm Ra inside and 1.2 μm Ra outside, with an electro-polish option to further resist bacterial growth.



Specifications

Model	LV6-HC	LV6-HS	LV6-HP*
Connection	Clamp End / Tube End	Clamp End / Tube End	
Size (in)	½, ¾, 1	½, ¾, 1	½, ¾, 1
Maximum Operating Pressure (psig) PMO	85		
Minimum Operating Pressure (psig)	Vacuum		
Maximum Back Pressure	90% of Inlet Pressure		
Maximum Operating Temperature (°F) TMO	329		
Maximum Allowable Pressure (psig) PMA	150		
Maximum Allowable Temperature (°F) TMA	365		
Subcooling of X-element Fill (°F)	Up to 3.6		
X-element type (for Clean Steam Traps)	Standard	Free-draining	Free-draining (electro-polished)
Clamp Type	2-Piece Clamp (Buff Polished)		3-Piece Clamp (Buff Polished)
Finishing (Internal / External)*	Natural Machining	0.8 μm Ra / 1.2 μm Ra (32 micro-inch/48 micro-inch) Fine Machining	0.8 μm Ra / 1.2 μm Ra (32 micro-inch/48 micro-inch) Buff Polished

* LV6-HE with 0.4 μm (10 micro-inch) Ra electro-polishing available on request

Connections and sizes in bold are standard.

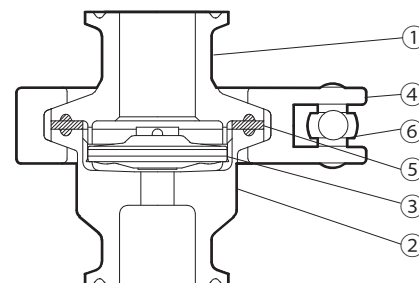
CAUTION To avoid abnormal operation, accidents or serious injury, DO NOT use this product outside of the specification range. Local regulations may restrict the use of this product to below the conditions quoted.

No.	Description	Material	ASTM/AISI*	JIS
①	Lower Body	Stainless Steel	AISI316L	—
②	Upper Body	Stainless Steel	AISI316L	—
③	X-element	Stainless Steel	AISI316L*	SUS316L
④	Body Clamp	Cast Stainless Steel	A351 Gr.CF8	—
⑤	Body Gasket **	Fluorine Resin	PTFE	PTFE
⑥	Wing Nut	Cast Stainless Steel	A351 Gr.CF8	—

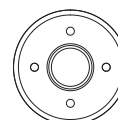
* Equivalent ** Body gasket is GYLON BIO-PRO; complies with FDA 21 CFR 177.1550, USP Class VI and EC 1935/2004.

GYLON BIO-PRO is a registered trademark of Garlock GmbH.

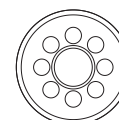
Material certificates to ISO 10474 2.2 or 3.1B available for major components, contact TLV for details



Standard X-element Free-draining X-element



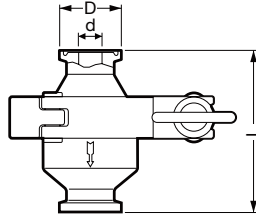
LV6-HC



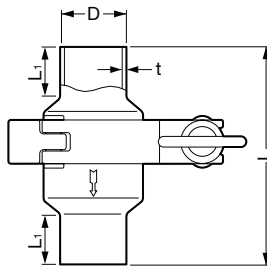
LV6-HS/HP

Dimensions

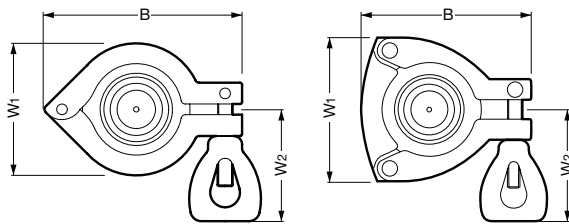
● LV6-HC/LV6-HS/LV6-HP Clamp End ASME-BPE (Tri-Clamp Compatible)



● LV6-HC/LV6-HS/LV6-HP Tube End



● Body Clamp



Tri-Clamp is a registered trademark of Alfa Laval Corporate AB.

LV6-HC/LV6-HS/LV6-HP Clamp End* (in)

Size	L	ϕD	ϕd	Weight (lb)
1/2	2 ⁹ / ₁₆	1	3/8	1.1
3/4			5/8	1.2
1		2	7/8	1.3

* ASME-BPE (Tri-Clamp compatible), other standards available

LV6-HC/LV6-HS/LV6-HP Tube End* (in)

Size	L	L1**	ϕD	t	Weight (lb)
1/2	3 ⁹ / ₁₆	3/4	1/2	1/16	1.2
3/4			3/4		1.2
1			1		1.3

* ISO 1127, other standards available

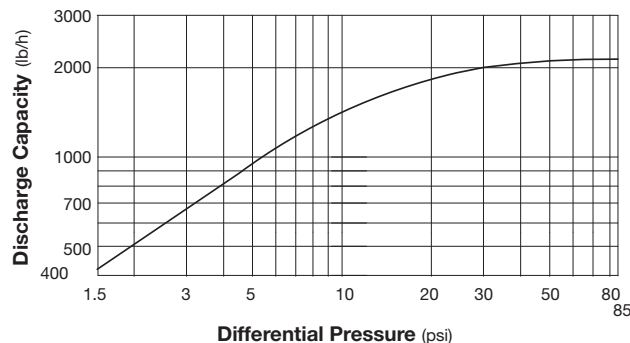
** Approximate dimension

Body Clamp (in)

Size	2-Piece: LV6-HC / LV6-HS			3-Piece: LV6-HP		
	B*	W1*	W2*	B*	W1*	W2*
1/2	3 ⁵ / ₈	2 1/2	2 ³ / ₁₆	3 1/4	2 3/4	2 ³ / ₁₆
3/4						
1						

* Approximate dimension

Discharge Capacity



1. Differential pressure is the difference between the inlet and outlet pressure of the trap.
2. Recommended safety factor: at least 2



DO NOT DISASSEMBLE OR REMOVE THIS PRODUCT WHILE IT IS UNDER PRESSURE.

Allow internal pressure of this product to equal atmospheric pressure and its surface to cool to room temperature before disassembling or removing. Failure to do so could cause burns or other injury. READ INSTRUCTION MANUAL CAREFULLY.

TLV CORPORATION

13901 South Lakes Drive, Charlotte, NC 28273-6790
Tel: 704-597-9070 Fax: 704-583-1610
E-mail: tlv@tlvengineering.com <https://www.tlv.com>
For Technical Service 1-800 "TLV TRAP"



Manufacturer
TLV CO., LTD.
Kakogawa, Japan
is approved by LRQA Ltd. to ISO 9001/14001

ISO 9001
ISO 14001

