



# THERMOSTATIC AIR VENT FOR STEAM

## MODEL LA6 Clean Air Vent

### STAINLESS STEEL THERMOSTATIC AIR VENT FOR PURE AND CLEAN STEAM SYSTEMS

#### Features

**Compact stainless steel air vent with fail-open feature for steam, for vertical installation. Recommended for use in pure and clean steam systems.**

1. Vents air automatically until close-to-steam temperature.
2. Compact for easy installation.
3. Reacts immediately to changes in operating conditions.
4. Withstands superheat and water hammer.
5. Maintainable design lowers cleaning costs.
6. Tight shut-off.
7. LA6-P polished to 0.8 µm Ra inside and 1.2 µm Ra outside, with an electro-polish option to further resist bacterial growth.
8. Also functions as a vacuum breaker.



#### Specifications

Model	LA6-CE	LA6-SF	LA6-P*
Connection	Clamp End / Tube End		
Size	15, 20, 25 mm (ISO) ½", ¾", 1" (ASME-BPE) / 8, 10, 15, 20, 25 mm (ISO)		
Maximum Operating Pressure (MPaG) PMO	0.6		
Minimum Operating Pressure (MPaG)	0.01		
Maximum Operating Temperature (°C) TMO	165		
Subcooling of X-element Fill (°C)	Up to 22		
X-element type	Standard		Electro-polished
Clamp Type	2-Piece Clamp (Buff Polished)		3-Piece Clamp (Buff Polished)
Finishing (Internal / External)*	Natural Machining	0.8 µm Ra / 1.2 µm Ra Fine Machining	0.8 µm Ra / 1.2 µm Ra Buff Polished

\* LA6-EP with 0.4 µm Ra electro-polishing available on request

1 MPa = 10.197 kg/cm<sup>2</sup>

PRESSURE SHELL DESIGN CONDITIONS (**NOT** OPERATING CONDITIONS): Maximum Allowable Pressure (MPaG) PMA: 1.0  
Maximum Allowable Temperature (°C) TMA: 185

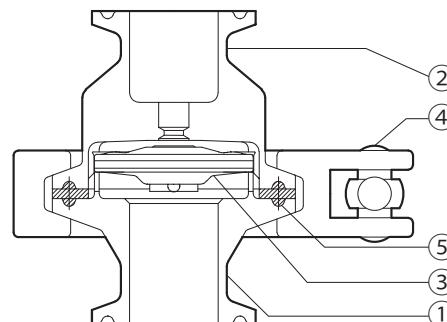


#### CAUTION

To avoid abnormal operation, accidents or serious injury, DO NOT use this product outside of the specification range. Local regulations may restrict the use of this product to below the conditions quoted.

No.	Description	Material	JIS	ASTM/AISI
①	Lower Body	Stainless Steel	—	AISI316L
②	Upper Body	Stainless Steel	—	AISI316L
③	X-element	Stainless Steel	SUS316L	AISI316L*
④	Body Clamp	Cast Stainless Steel	—	A351 Gr.CF8
⑤	Body Gasket**	High-performance Fluorine Resin	—	—

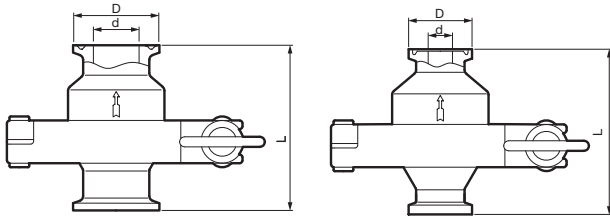
\* Equivalent \*\* Body gasket is GYLON BIO-PRO; complies with FDA 21 CFR 177.1550, USP Class VI and EC 1935/2004.  
GYLON BIO-PRO is a registered trademark of Garlock GmbH.  
Material certificates to ISO 10474 2.2 or 3.1B available for major components, contact TLV for details.



## Dimensions

### ● LA6-CE/LA6-SF/LA6-P Clamp End

ISO 2852 Clamp / ISO 2037 Tube ASME-BPE (Tri-Clamp Compatible)



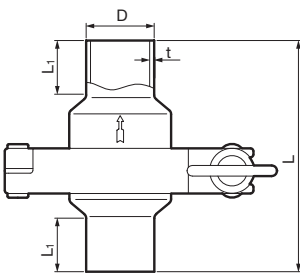
### LA6-CE/LA6-SF/LA6-P Clamp End\* (mm)

Size	L	φ D	φ d	Weight (kg)
15 [1/2"]	65	34 [25]	15.2 [9.4]	0.5
20 [3/4"]			19.3 [15.75]	0.55
25 [1"]		50.5	22.6 [22.1]	0.6

\* ISO 2852 Clamp / ISO 2037 Tube or ASME-BPE (Tri-Clamp compatible)  
[ ] ASME-BPE (Tri-Clamp compatible)

### ● LA6-CE/LA6-SF/LA6-P Tube End

ISO 1127

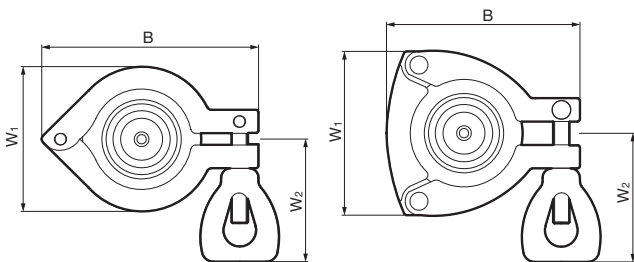


### LA6-CE/LA6-SF/LA6-P Tube End\* (mm)

Size	L	L1	φ D	t	Weight (kg)
8	90	20	13.5	1.6	0.5
10			17.2		0.55
15			21.3		
20			26.9	2.0	0.6
25			33.7		

\* ISO 1127, other standards available

### ● Body Clamp

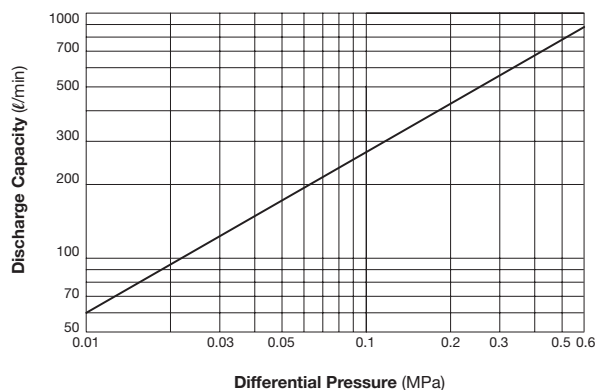


### Body Clamp (mm)

Size	2-Piece: LA6-CE / LA6-SF			3-Piece: LA6-P		
	B*	W1*	W2*	B*	W1*	W2*
8	92	62	55	82	70	55
10						
15						
20						
25						

\* Approximate dimension

## Air Venting Capacity



1. Differential pressure is the difference between the inlet and outlet pressures of the air vent.
2. Capacities are equivalent capacities of air at 20 °C under atmospheric pressure.

Manufacturer

**TLV® CO., LTD.**

Kakogawa, Japan

is approved by LRQA Ltd. to ISO 9001/14001

ISO 9001  
ISO 14001

