



HIGH CAPACITY BALANCED PRESSURE THERMOSTATIC STEAM TRAP

MODEL LV6-HC Clean Steam Trap

HIGH CAPACITY STAINLESS STEEL THERMOSTATIC STEAM TRAP FOR PURE AND CLEAN STEAM SYSTEMS

Features

Balanced pressure thermostatic steam trap recommended for use in reactors, sterilizers and distribution lines in clean and pure steam systems.

1. Free-draining, virtually crevice-free design minimizes the possibility of bacteria buildup.
2. "Fail open" feature will not hold back condensate in steam space.
3. Large orifice provides high air venting capacity for rapid start-up and resists plugging to ensure continuous operation.
4. Compact for easy installation.
5. Maintainable design lowers cleaning costs.
6. LV6-HP polished to 0.8 μm Ra inside and 1.2 μm Ra outside, with an electro-polish option to further resist bacterial growth.



Specifications

Model	LV6-HC	LV6-HS	LV6-HP**
Connection	Clamp End / Tube End		
Size	15, 20, 25 mm (ISO) 1/2", 3/4", 1" (ASME-BPE) / 8, 10, 15, 20, 25 mm (ISO)		
Maximum Operating Pressure (MPaG) PMO	0.6		
Minimum Operating Pressure (MPaG)	0.01		
Maximum Back Pressure	90% of Inlet Pressure		
Maximum Operating Temperature (°C) TMO	165		
Subcooling of X-element Fill (°C)	Up to 2		
X-element type (for Clean Steam Traps)	Standard	Free-draining	Free-draining (electro-polished)
Clamp Type*	2-Piece Clamp (Buff Polished)		3-Piece Clamp (Buff Polished)
Finishing (Internal / External)**	Natural Machining	0.8 μm Ra / 1.2 μm Ra Fine Machining	0.8 μm Ra / 1.2 μm Ra Buff Polished

* Other clamp types available, contact TLV for details

** LV6-HE with 0.4 μm Ra electro-polishing available on request

1 MPa = 10.197 kg/cm²

PRESSURE SHELL DESIGN CONDITIONS (**NOT** OPERATING CONDITIONS): Maximum Allowable Pressure (MPaG) PMA: 1.0
Maximum Allowable Temperature (°C) TMA: 185
Minimum Allowable Temperature (°C): -40

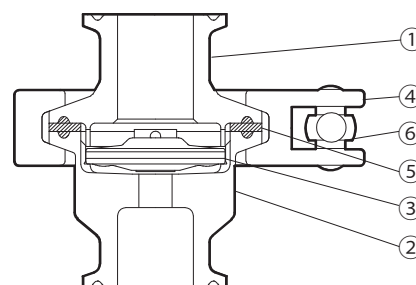


To avoid abnormal operation, accidents or serious injury, DO NOT use this product outside of the specification range. Local regulations may restrict the use of this product to below the conditions quoted.

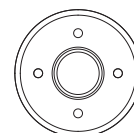
No.	Description	Material	JIS	ASTM/AISI*
①	Lower Body	Stainless Steel	—	AISI316L
②	Upper Body	Stainless Steel	—	AISI316L
③	X-element	Stainless Steel	SUS316L	AISI316L*
④	Body Clamp	Cast Stainless Steel	—	A351 Gr.CF8
⑤	Body Gasket **	Fluorine Resin	PTFE	PTFE
⑥	Wing Nut	Cast Stainless Steel	—	A351 Gr.CF8

* Equivalent ** Body gasket is GYLON BIO-PRO; complies with FDA 21 CFR 177.1550, USP Class VI and EC 1935/2004.

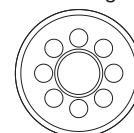
GYLON BIO-PRO is a registered trademark of Garlock GmbH. Material certificates to ISO 10474 2.2 or 3.1B available for major components, contact TLV for details



Standard X-element Free-draining X-element



LV6-HC

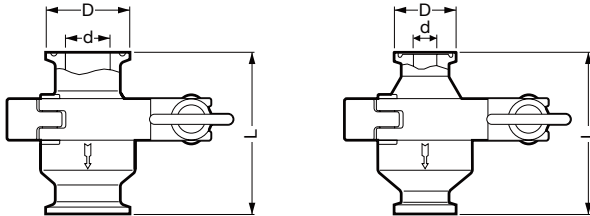


LV6-HS/HP

Dimensions

● LV6-HC/LV6-HS/LV6-HP Clamp End

ISO 2852 Clamp / ISO 2037 Tube ASME-BPE (Tri-Clamp Compatible)



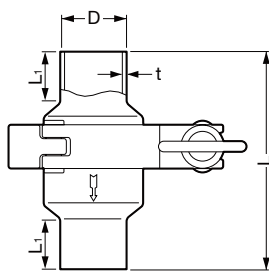
LV6-HC/LV6-HS/LV6-HP Clamp End* (mm)

Size	L	φ D	φ d	Weight (kg)
15 [½"]	65	34 [25]	15.2 [9.4]	0.5
20 [¾"]			19.3 [15.75]	0.55
25 [1"]		50.5	22.6 [22.1]	0.6

* ISO 2852 Clamp / ISO 2037 Tube or ASME-BPE (Tri-Clamp compatible)
[] ASME-BPE (Tri-Clamp compatible)

● LV6-HC/LV6-HS/LV6-HP Tube End

ISO 1127

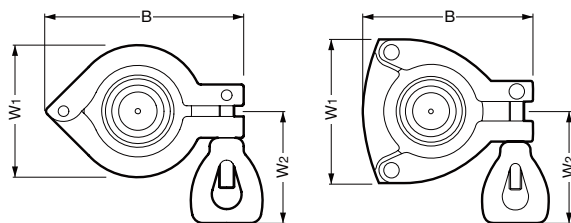


LV6-HC/LV6-HS/LV6-HP Tube End* (mm)

Size	L	L1	φ D	t	Weight (kg)
8	90	20	13.5	1.6	0.5
10			17.2		0.55
15			21.3		
20			26.9		
25			33.7	2.0	0.6

* ISO 1127, other standards available

● Body Clamp

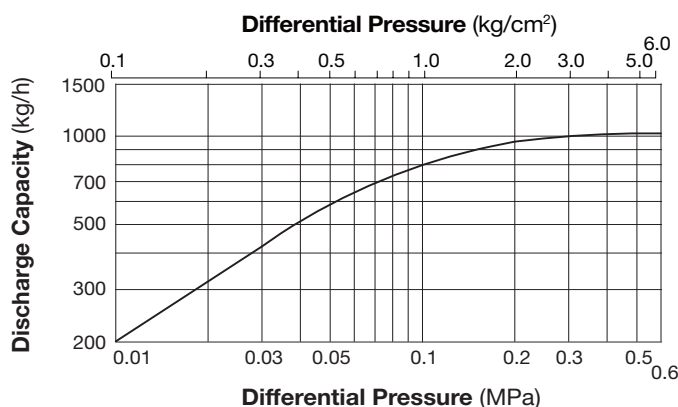


Body Clamp (mm)

Size	2-Piece: LV6-HC / LV6-HS			3-Piece: LV6-HP		
	B*	W1*	W2*	B*	W1*	W2*
8	92	62	55	82	70	55
10						
15						
20						
25						

* Approximate dimension

Discharge Capacity



1. Differential pressure is the difference between the inlet and outlet pressure of the trap.
2. Recommended safety factor: at least 2.

Manufacturer

TLV® CO., LTD.
Kakogawa, Japan

is approved by LRQA Ltd. to ISO 9001/14001

ISO 9001
ISO 14001

