



THERMOSTATIC AIR VENT FOR STEAM

MODEL LA6 Clean Air Vent STAINLESS STEEL

STAINLESS STEEL THERMOSTATIC AIR VENT FOR PURE AND CLEAN STEAM SYSTEMS

Features

Compact stainless steel air vent with fail-open feature for steam, for vertical installation. Recommended for use in pure and clean steam systems.

1. Vents air automatically until close-to-steam temperature.
2. Compact for easy installation.
3. Reacts immediately to changes in operating conditions.
4. Withstands superheat and water hammer.
5. Maintainable design lowers cleaning costs.
6. Tight shut-off.
7. LA6-P polished to 0.8 μm Ra inside and 1.2 μm Ra outside, with an electro-polish option to further resist bacterial growth.
8. Also functions as a vacuum breaker.



Pressure Equipment Directive (PED)

Classification according to PED 2014/68/EU, fluid group 2

Size	Category	CE marking
DN 8 to DN 25	—*	Art. 4, Sec. 3 (sound engineering practice), CE marking not allowed

* Manufactured in accordance with sound engineering practice

Specifications

Model	LA6-CE	LA6-SF	LA6-P*
Connection	Clamp End / Tube End		
Size	DN 15, 20, 25 / DN 8, 10, 15, 20, 25		
Maximum Operating Pressure (barg) PMO	6		
Minimum Operating Pressure (barg)	0.1		
Maximum Operating Temperature (°C) TMO	165		
Subcooling of X-element Fill (°C)	Up to 22		
X-element type	Standard		Electro-polished
Clamp Type**	2-Piece Clamp (Buff Polished)		3-Piece Clamp (Buff Polished)
Finishing (Internal / External)	Natural Machining	0.8 μm Ra / 1.2 μm Ra Fine Machining	0.8 μm Ra / 1.2 μm Ra Buff Polished

* LA6-EP with 0.4 μm Ra electro-polishing available on request ** Other clamp types available, contact TLV for details

1 bar = 0.1 MPa
PRESSURE SHELL DESIGN CONDITIONS (**NOT** OPERATING CONDITIONS): Maximum Allowable Pressure (barg) PMA: 10
Maximum Allowable Temperature (°C) TMA: 185



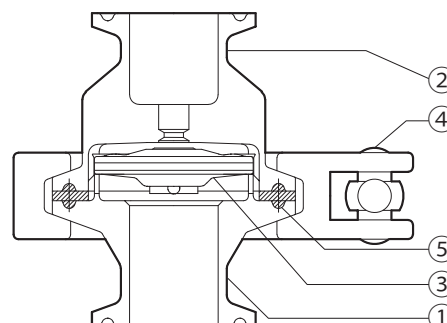
To avoid abnormal operation, accidents or serious injury, DO NOT use this product outside of the specification range. Local regulations may restrict the use of this product to below the conditions quoted.

No.	Description	Material	DIN*	ASTM/AISI*
①	Lower Body	Stainless Steel AISI316L	1.4404	—
②	Upper Body	Stainless Steel AISI316L	1.4404	—
③	X-element	Stainless Steel SUS316L	1.4404	AISI316L
④	Body Clamp	Cast Stainless Steel A351 Gr.CF8	1.4312	—
⑤	Body Gasket**	High-performance Fluorine Resin	—	—

* Equivalent materials ** Body gasket is GYLON BIO-PRO; complies with FDA 21 CFR 177.1550, USP Class VI and EC 1935/2004.

GYLON BIO-PRO is a registered trademark of Garlock GmbH.

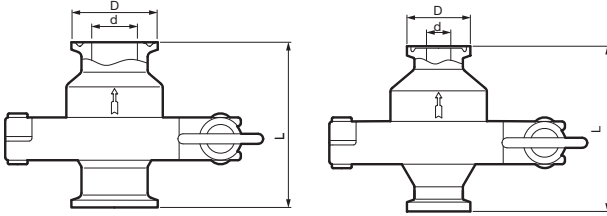
Material certificates to ISO 10474 2.2 or 3.1B available for major components, contact TLV for details.



Dimensions

● LA6-CE/LA6-SF/LA6-P Clamp End

ISO 2852 Clamp / ISO 2037 Tube ASME-BPE (Tri-Clamp Compatible)



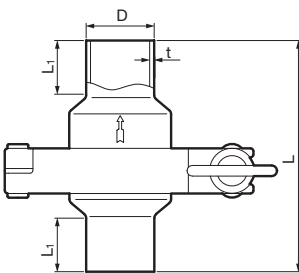
LA6-CE/LA6-SF/LA6-P Clamp End* (mm)

DN [Size]	L	φ D	φ d	Weight (kg)
15 [1/2"]	65	34 [25]	15.2 [9.4]	0.5
20 [3/4"]			19.3 [15.75]	0.55
25 [1"]		50.5	22.6 [22.1]	0.6

* ISO 2852 Clamp / ISO 2037 Tube or ASME-BPE (Tri-Clamp compatible)
[] ASME-BPE (Tri-Clamp compatible)

● LA6-CE/LA6-SF/LA6-P Tube End

ISO 1127

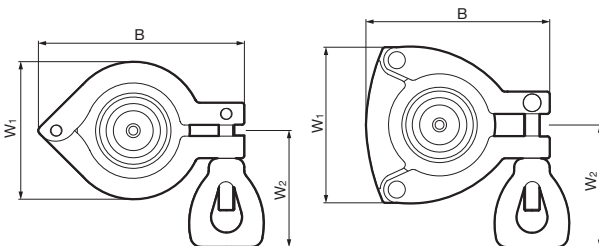


LA6-CE/LA6-SF/LA6-P Tube End* (mm)

DN	L	L1	φ D	t	Weight (kg)
8	90	20	13.5	1.6	0.5
10			17.2		0.55
15			21.3		
20			26.9		
25			33.7	2.0	0.6

* ISO 1127, other standards available

● Body Clamp



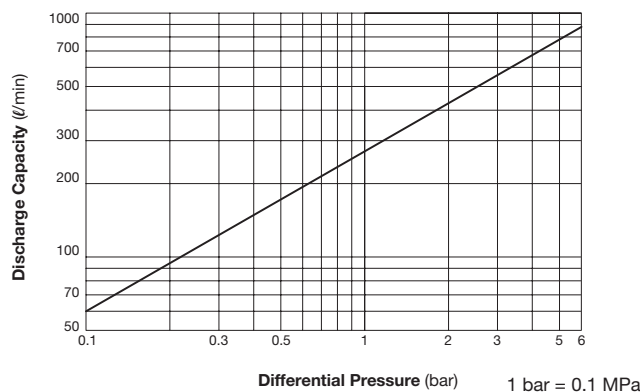
Body Clamp (mm)

DN	2-Piece: LA6-CE / LA6-SF			3-Piece: LA6-P		
	B*	W1*	W2*	B*	W1*	W2*
8	92	62	55	82	70	55
10						
15						
20						
25						

* Approximate dimension

Tri-Clamp is a registered trademark of Alfa Laval Corporate AB.

Air Venting Capacity



1. Differential pressure is the difference between the inlet and outlet pressures of the air vent.
2. Capacities are equivalent capacities of air at 20 °C under atmospheric pressure.

Manufacturer
TLV® CO., LTD.
Kakogawa, Japan
is approved by LRQA Ltd. to ISO 9001/14001

ISO 9001
ISO 14001

