



FREE FLOAT STEAM TRAPS

MODEL JH8RX/JH8R

CAST STEEL FREE FLOAT STEAM TRAPS WITH THERMOSTATIC AIR VENTING

Benefits

Extremely durable, inline repairable free-float trap with tight shut-off for drainage of large-size process heaters

1. Self-modulating free float provides soft and continuous, low velocity discharge as process loads vary for maximum performance.
2. Unique rotational seating design eliminates concentrated wear to provide long life.
3. JH8RX: durable thermostatic unit (X-element) automatically vents air for exceptional start-up and performance.
4. Easy, inline access to internal parts simplifies cleaning and lowers maintenance costs.
5. Rugged float construction with up to 1500 or 1600* psig hydraulic shock rating ensures excellent resistance to water hammer.
6. Built-in screen with large surface area ensures extended trouble-free service.

* Depending on orifice No.

Specifications

Model		JH8RX	JH8R
Connection		Flanged	Flanged
Size (in)		2, 3	2, 3
Orifice No.		1, 2, 5, 10, 14, 22, 32	40
Maximum Operating Pressure (psig)	PMO	15, 30, 75, 150, 200, 315, 450	600
Maximum Differential Pressure (psi)	Δ PMX	15, 30, 75, 150, 200, 315, 450	600
Minimum Operating Pressure (psig)			Vacuum
Maximum Operating Temperature (°F)	TMO	464	800
Maximum Allowable Pressure (psig)	PMA		650
Maximum Allowable Temperature (°F)	TMA		800



U.S. Pat. 5,197,669 (JH8RX)

No.	Description	Material	ASTM/AISI*	JIS
①	Body	Cast Steel	A216 Gr. WCB	—
②	Cover	Carbon Steel	A105	—
③ ^F	Float	Stainless Steel	AISI316L	SUS316L
④ ^R	Orifice	—	—	—
⑤ ^{MR}	Orifice Gasket	Soft Iron	AISI1010	SUYP
⑥ ^{MR}	Outlet Cover Gasket	Stainless Steel/Graphite	AISI304	SUS304
⑦ ^R	Screen	Stainless Steel	AISI430	SUS430
⑧	Screen Holder	Stainless Steel	AISI304	SUS304
⑨	Snap Ring	Stainless Steel	AISI304	SUS304
⑩ ^{MR}	Cover Gasket	Stainless Steel/Graphite	AISI304	SUS304
⑪	Cover Bolt	Alloy Steel	A193 Gr. B16	SNB16
⑫	Cover Nut	Carbon Steel	AISI1045	S45C
⑬	Outlet Cover	Stainless Steel	AISI420	SUS420J2
⑭	Outlet Cover Bolt	Alloy Steel	A193 Gr. B16	SNB16
⑮	Outlet Cover Nut	Carbon Steel	AISI1045	S45C
⑯	Eye Bolt	Carbon Steel	A6	SS400
⑰	Screen Holder Retainer	Stainless Steel	AISI304	SUS304
⑱	Plug**	Carbon Steel	AISI1025	S25C
⑲	Plug Gasket**	Soft Iron	AISI1010	SUYP
⑳	Flange	Cast Steel	A216 Gr. WCB	—
㉑	Nameplate	Stainless Steel	AISI304	SUS304
㉒	Drain Plug	Carbon Steel	AISI1025	S25C
㉓ ^{MR}	Drain Plug Gasket	Soft Iron	AISI1010	SUYP
㉔ ^X	X-element Case	Cast Stainless Steel	A351 Gr. CF8	—
㉕ ^X	Snap Ring	Stainless Steel	AISI304	SUS304
㉖ ^X	X-element Screen	Stainless Steel	AISI304	SUS304
㉗ ^X	Spring Clip	Stainless Steel	AISI304	SUS304
㉘ ^X	X-element	Stainless Steel	—	—
㉙ ^X	Air Vent Valve Seat	Stainless Steel	AISI630	SUS630
㉚ ^{MR}	X-element Case Gasket	Soft Iron	AISI1010	SUYP
㉛	Plug	Carbon Steel	AISI1025	S25C
㉜ ^{MR}	Plug Gasket	Soft Iron	AISI1010	SUYP

* Equivalent ** For optional Air Vent Valve Kit available for JH8R

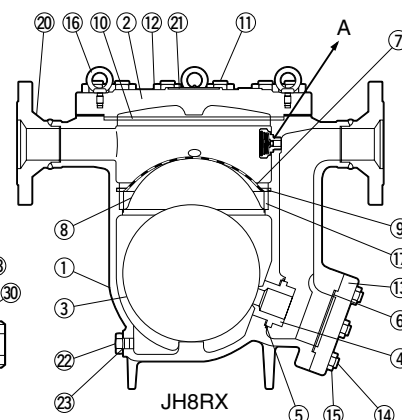
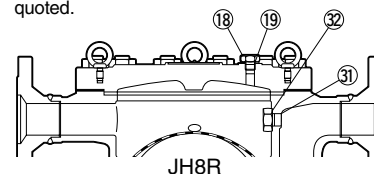
Parts 24-30 for JH8RX only, parts 18, 19, 31, 32 for JH8R only

Replacement kits available: (M) maintenance parts, (R) repair parts, (F) float, (X) X-element unit

Connections and sizes in bold are standard

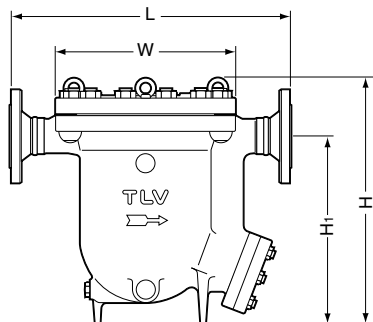


To avoid abnormal operation, accidents or serious injury, DO NOT use this product outside of the specification range. Local regulations may restrict the use of this product to below the conditions quoted.



Dimensions

● **JH8RX/JH8R** Flanged



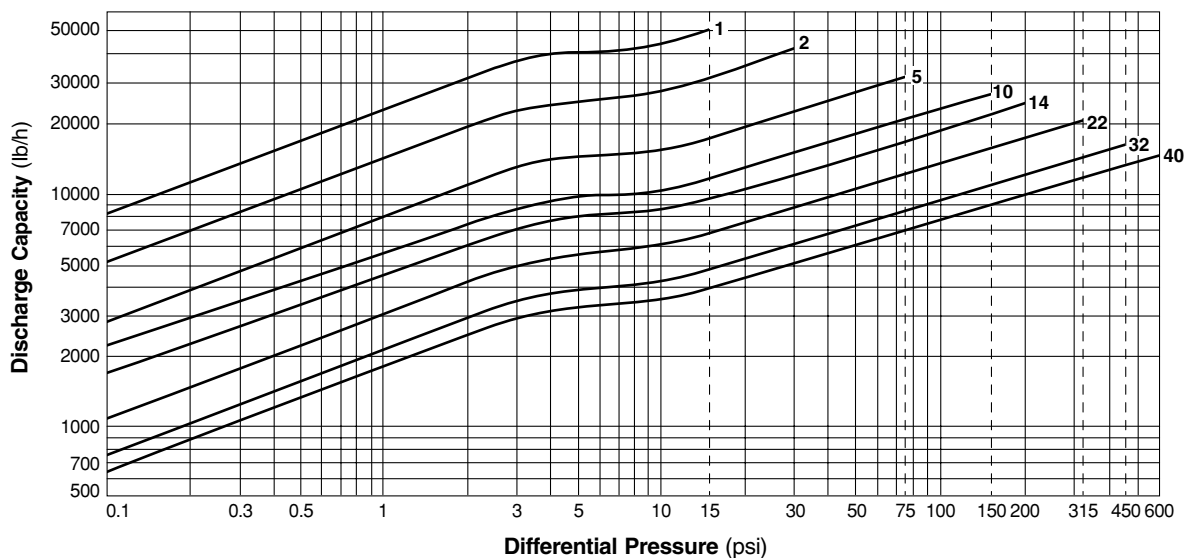
JH8RX/JH8R Flanged (in.)

Size	L			H	H ₁	φ W	Weight* (lb.)
	ASME Class						
	150RF	300RF	600RF				
2	23 1/4	23 1/2	24 1/4	20 5/8	15 3/4	14 3/4	265
3	23 1/8	23 9/16	24 5/16				287

Other standards available, but length and weight may vary
* Weight is for Class 600 RF

Flange classes in bold are standard

Discharge Capacity



1. Line numbers within the graph refer to orifice numbers.
2. Differential pressure is the difference between the inlet and outlet pressure of the trap.
3. Capacities are based on continuous discharge of condensate 11 °F below saturated steam temperature.
4. Recommended safety factor: at least 1.5.
5. Capacities for orifice #1 - 32 apply only to JH8RX, capacity for orifice #40 applies only to JH8R.



DO NOT use traps under conditions that exceed maximum differential pressure, as condensate backup will occur!

TLV CORPORATION

13901 South Lakes Drive, Charlotte, NC 28273-6790
Phone: 704-597-9070 Fax: 704-583-1610
E-mail: tlv@tlvengineering.com
For Technical Service 1-800 "TLV TRAP"



Manufacturer
TLV CO., LTD.
Kakogawa, Japan
is approved by LRQA Ltd. to ISO 9001/14001

ISO 9001/ISO 14001

