



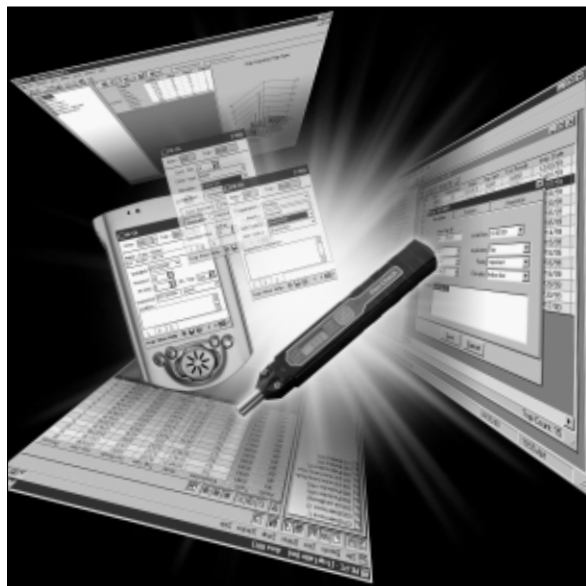
PenCheck® System Package

COMPUTERIZED STEAM TRAP MANAGEMENT SYSTEM FOR PRODUCTIVE MAINTENANCE

Benefits

Complete measurement and analysis system for effective management of small to medium steam trap populations.

1. PK1 eliminates the need for multiple testing instruments.
2. Auto-judgement of operating conditions by PK-DL, based on a test standard, eliminates tester subjectivity.
3. Testing efficiency is maximized through the use of integrated on-site and office software.
4. Office-based software (PK-PC) offers a comprehensive range of features and database editing tools that enable effective management of the entire steam trap population.
5. Graphs and reports can be printed or exported to most well-known commercial software packages to facilitate professional reporting and assist with implementation of corrective actions.



Package Components*

● PK1 Diagnostic Unit

Pocket-size precision testing instrument for simultaneous ultra-sonic vibration and temperature measurement.

Also includes: hard case, extra battery packs, earphone, manuals, flat file

● Pocket PC

Hand-held computer that runs the PK-DL software.

Also includes: cradle/charger with communications cable, AC adapter, rechargeable battery pack, soft case, Windows-based operating system software and manuals

● PK-DL Software**

Software, used on the included Pocket PC, for recording trap details, PK1 test results and steam trap operational judgement.

● PK-PC Software**

Trap management database software, used on an office PC to facilitate management of the steam trap population.

Also includes: hardlock security key (HASP)



* Contained in custom carrying case, to provide maximum portability

** Software applications and Quick Start Guide found on included CD-ROM

Sample Screens

● PK-DL Software

Trap List

AreaID	TrapID	Maker	Type	
1	001	00901	TLV	DESC
2	001	00905	TLV	FLOAT
3	001	00910	TLV	DESC
4	001	00915	TLV	FLOAT
5	001	00920	TLV	FLOAT
6	001	00925	TLV	FLOAT
7	001	00930	TLV	DESC
8	001	00935	TLV	FLOAT
9	002	00901	TLV	FLOAT
10	002	00100	TLV	THROPM
11	002	00200	TLV	THROPM
12	002	00300	TLV	THROPM

Trap Details

Area: 001 Trap: 00190

Maker: Type: Model: TLV-FLOAT-23-710

Installed: 07/12/2000

Pressure: 66

Pk. Arg: 0 Sfc. Temp: 126

Inspected: 07/12/2000 Good

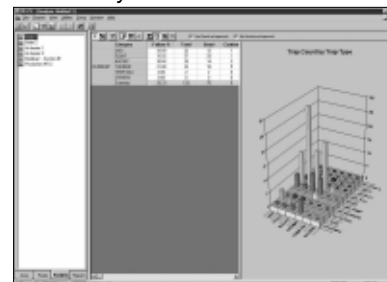
Location:

● PK-PC Software

Trap Master Log

Area	Trap	Maker	Type	Pressure	Pk. Arg	Sfc. Temp	Inspected	Location
001	00190	TLV	FLOAT	66	0	126	07/12/2000	Good

Data Analysis



Specifications for PK1 (Diagnosis Instrument)

Model		PK1*
Temperature Measurement Range		32 °F – 491 °F
Central Frequency		Approximately 40 kHz
Band Width		Approximately 20 kHz (-3dB)
PK1 Display	Average Vibration Level	0.00 – 255.0 Scale Reading (AVG)
	Peak Vibration Level	0.00 – 255.0 Scale Reading (PEAK)
	Surface Temperature	32 °F – 491 °F (TEMP)
	Level Indicators	Vibration levels are shown in bar graph form as well as on a numeric digital display
	Overload	Indicators appear if the vibration level limit is exceeded or if the surface temperature falls outside the allowable measurement range
Measurement "Auto Start"		Measurement begins automatically when the tip of PK1 is placed against the object to be measured
Data Display "Auto Hold"		When the tip is removed from the tested object, data is automatically retained
Auto Power-off		Yes
Power Source		One (1) lithium battery pack (3CR-1/3N)
Total Battery Use Time		Approximately 5 hours
Weight		Approximately 2.3 oz.

* For more detailed information, see the separate PK1 specification data sheet

Specifications for PK-DL (On-site Database and Judgement Software)

Model		PK-DL
Main Features	Management Log	Can display and maintain trap lists and trap details
	Judgement	Auto-judgement of trap test data by comparison to a reference standard according to trap type classification (float, disc, etc.) Traps operating between pressures of 15 psig and 580 psig
	Communication	Automatic data transfer with TLV PK-PC software
Pocket PC Specifications**	OS	Windows CE 3.0 or later
	CPU	MIPS or ARM based CPU
	Interface	Serial: RS-232C, infrared: IrDA Ver. 1.0 protocol
	Required Hard Disk Space	1 MB for software installation, plus approximately 0.25 MB for 1000* trap records
	RAM	(Minimum) 32 MB
	Display	Hyper Amorphous Silicon TFT 65,536 Color LCD or Monochrome
	Operating Temperature	32 °F to 104 °F
	Power Supply	Main: Rechargeable battery pack Back-up: One lithium battery
Weight		Approximately 9 oz.

* Recommended maximum number of traps for optimum performance

** Contact your TLV representative for further details about the Pocket PC included in the PenCheck System Package

Specifications for PK-PC (Analysis and Management Software)

Model		PK-PC
Main Features	Management Log	Can display and maintain trap tables, failed traps and trap histories
	Trap Route	Survey route can easily be set and saved
	Analysis	Can analyze and save inspection data by selecting various conditions in detail
	Report	Can print log details, inspection history, failed trap list, trap route, etc.
	Communication	Automatic data transfer with TLV PK-DL software
PC Requirements	OS	Windows 95 or 98
	CPU	(Minimum) Intel Pentium 166, (recommended) Intel Pentium 350 or higher capability, PK-DL has been designed to work with Intel processors
	Required Hard Disk Space	20 MB for software installation
	RAM	(Minimum) 32 MB, (recommended) 64 MB or more
	CD-ROM Drive	(Minimum) 2 x (double speed)
	Display	(Minimum) VGA monitor (600 x 800) with graphic features to display 256 colors, best viewed with resolution 1024 x 768 pixels (or higher), High Color (16-bit)

Windows is a trademark of Microsoft Corporation, and Pentium is a trademark of Intel Corporation.

TLV CORPORATION

13901 South Lakes Drive, Charlotte, NC 28273-6790
 Phone: 704-597-9070 Fax: 704-583-1610
 E-mail: tlv@tlvengineering.com
 For Technical Service 1-800 "TLV TRAP"



Manufacturer
TLV® CO., LTD.
 Kakogawa, Japan
 is approved by LRQA Ltd. to ISO 9001/14001

ISO 9001/ISO 14001

